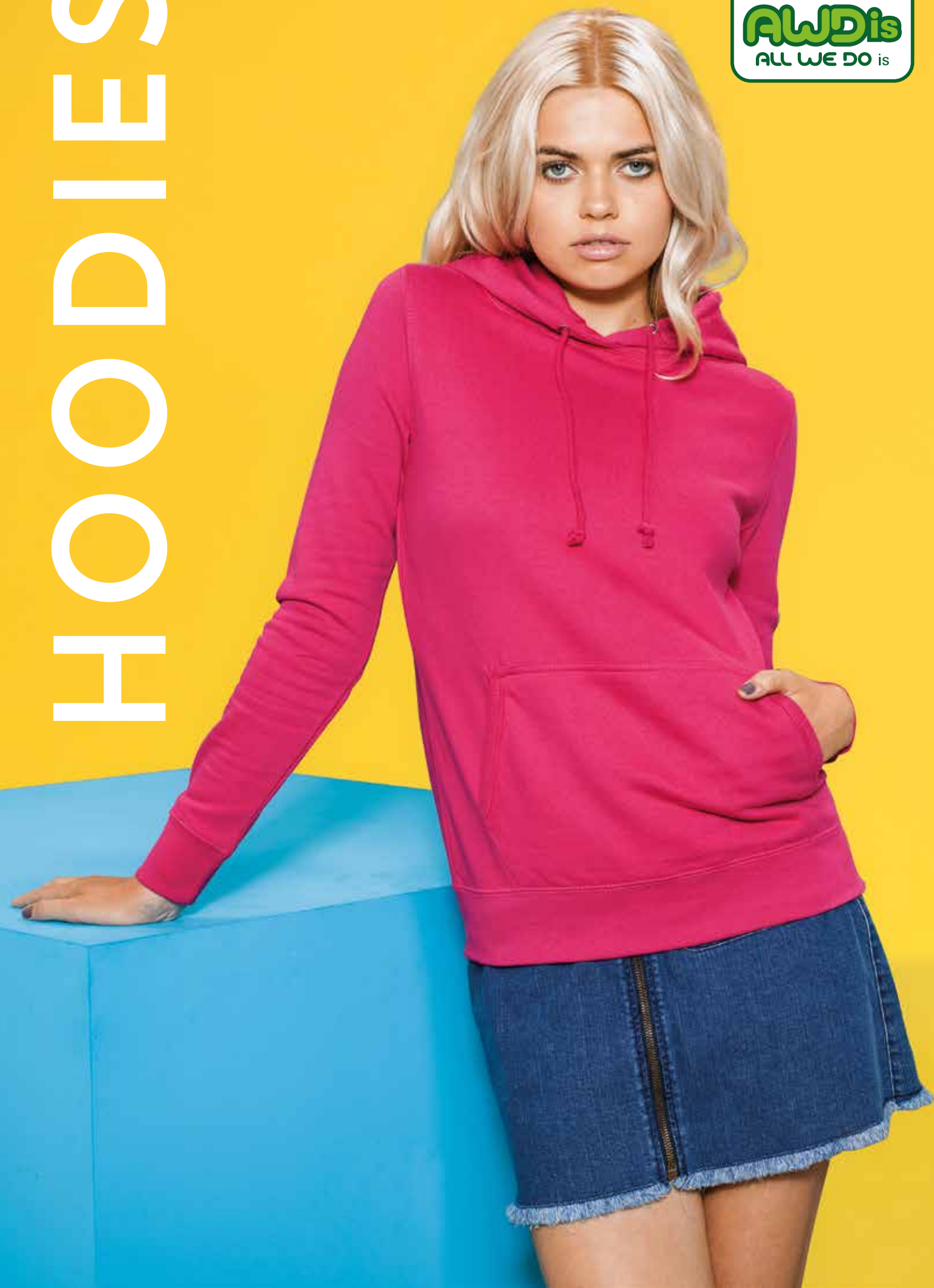


# HOODIES





# COLLEGE HOODIE 001



**SOFT COTTON-FACED FABRIC CREATES THE  
IDEAL PRINT SURFACE FOR YOUR BRAND.  
WITH OUR BEST EVER COLOUR RANGE!**







JH001

DRAWING  
down  
the  
Moon

+ K

**JH001**

**College hoodie**

- Ribbed cuffs and hem
- Kangaroo pouch pocket with hidden earphone cord feed
- Double-fabric hood

F 80% Ringspun cotton, 20% Polyester  
W 280gsm

XS 34" S 36" M 40" L 44" XL 48" 2XL 52"  
3XL 56" 4XL\* 60" 5XL\* 64"

\*4XL-5XL only available in these colours



JH001

Stuck in  
the  
90's

DECORATION ON GARMENT(S)  
FOR ILLUSTRATIVE PURPOSES  
ONLY

# THE VARSITY HOODIE



Arctic White/  
French Navy



Arctic White/  
Hot Pink



Bottle Green/  
Fire Red



Burgundy/  
Charcoal\*



Burgundy/  
Gold



**New**  
Burgundy/  
Oxford Navy



**New**  
Charcoal/  
Burgundy/



**New**  
Charcoal/  
Heather Grey



Charcoal/  
Jet Black\*



Charcoal/  
Orange Crush



Candyfloss Pink/  
Hot Pink



Forest Green/  
Gold



Fire Red/  
Arctic White



Fire Red/  
Jet Black\*



Hawaiian Blue/  
Oxford Navy



Heather Grey/  
Fire Red\*



Heather Grey/  
French Navy\*Δ†



**New**  
Heather Grey/  
Jet Black



**New**  
Heather Grey/  
Sapphire Blue



Hot Chocolate/  
Vanilla Milkshake



Hot Pink/  
French Navy\*



Hot Pink/  
Heather Grey\*



**New**  
Jet Black/  
Arctic White



Jet Black/  
Fire Red\*Δ†



Jet Black/  
Gold\*†



Jet Black/  
Heather Grey\*Δ†



Jet Black/  
Hot Pink\*



Jet Black/  
Kelly Green\*



Jet Black/  
Orange Crush\*



Jet Black/  
Purple



Jet Black/  
Sapphire Blue\*



**New**  
Jet Black/  
Sun Yellow



Kelly Green/  
Arctic White



Kelly Green/  
Sun Yellow



Lime Green/  
Magenta Magic



**New** French Navy/  
Fire Red\*†



**New** French Navy/  
Heather Grey\*Δ†



**New** French Navy/  
Sky Blue\*



Oxford Navy/  
Candyfloss Pink



Oxford Navy/  
Hawaiian Blue



Oxford Navy/  
Sun Yellow



Purple/  
Heather Grey



Purple/  
Sun Yellow\*



Royal Blue/  
Arctic White\*



Royal/  
Sun Yellow\*



Sapphire Blue/  
Lime Green



Sapphire Blue/  
Heather Grey\*



Sapphire Blue/  
Orange Crush\*



Sky/  
Arctic White



Sun Yellow/  
Fire Red

\* XS ONLY AVAILABLE IN THESE COLOURS

† 3XL ONLY AVAILABLE IN THESE COLOURS

Δ 4XL - 5XL ONLY AVAILABLE IN THESE COLOURS





JH003

JH003

003



**JH003**

**Varsity hoodie**

- Kangaroo pouch pocket with hidden opening for earphone cord feed
- Hidden earphone loops
- Double-fabric hood with contrast inner

F 80% Ringspun cotton, 20% Polyester

W 280gsm

**XS\*** 34" **S** 36" **M** 40" **L** 44" **XL** 48" **2XL** 52"  
**3XL†** 56" **4XLΔ** 60" **5XLΔ** 64"

\*XS only available in these colours.

†3XL only available in these colours.

Δ4XL - 5XL only available in these colours

**MOST  
WANTED**



HOODIES



BE106

## THE ZIP-UP HOODIE

EVERYONE'S FAVOURITE IN 17 COLOURS

Asphalt

Black	Dark Grey Marble Fleece
Digital Black	Digital Blue
Digital Grey	Light Grey Marble Fleece
Navy	Neon Blue
Neon Pink	Neon Yellow
Red Marble Fleece	Red
Teal	Team Purple
True Royal	White

### BE106

#### Unisex polycotton fleece full zip hoodie

- Full zip closure with white taping
- Ribbed cuffs and waistband
- Relaxed unisex fit

F 60% Combed and ringspun cotton, 40% Polyester fleece. 30 single

W 240gsm

XS 32/34" S 34/36" M 38/40" L 42/44" XL 46/48" 2XL 48/50"



SLIM FIT

BE109

## UNISEX JERSEY LONG SLEEVE HOODIE

### BE109

#### Unisex Jersey long sleeve hoodie

- Crossover 'V' at neckline
- Side-seamed
- Slim fit

F 100% Combed and ringspun cotton. 30 single. Heather Navy: 52% Combed and ringspun cotton, 48% Polyester

W 145gsm

XS 31/34" S 34/37" M 38/41" L 42/45" XL 46/49" 2XL 50/53"



Black



Deep Heather



Heather Navy



White

## RELAXED UNISEX FIT



FEATURE:  
RIBBED  
CUFFS  
AND  
WAISTBAND

MARBLE

BE105

### BE105

#### Unisex polycotton fleece pullover hoodie

- White cord drawstring
- Ribbed cuffs and waistband
- Relaxed unisex fit

F 60% Combed and ringspun cotton, 40% Polyester fleece. 30 single

W 240gsm

XS 32/34" S 34/36" M 38/40" L 42/44" XL 46/48" 2XL 48/50"



Black



Dark Grey Marble Fleece



Deep Heather



Digital Black



Digital Blue



Digital Grey



Light Grey Marble Fleece



Navy



Red



Red Marble Fleece



True Royal

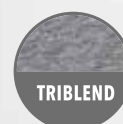


White



CV040

# UNISEX TRIBLEND FULL ZIP HOODIE



## CASUAL ESSENTIALS



Ideal for layering through the seasons, our hoodies and sweatshirts are your failsafe solution for off-duty style that effortlessly go from day to night.

## TRIBLEND HOODIES FOR A CHILLED-OUT MODE



### UNISEX TRIBLEND LIGHTWEIGHT HOODIE

Blue Triblend

Charcoal Black Triblend

Grey Triblend

Light Red Triblend

Solid Black Triblend

BE108

### CV040

#### Unisex triblend full zip hoodie

- Kangaroo pockets
- Rib cuffs and waistband
- Relaxed unisex fit

F 50% Polyester, 37.5% Cotton, 12.5% Rayon. 30 single  
W 280gsm

**XS** 35" **S** 37" **M** 39" **L** 42" **XL** 44" **2XL** 46"



Blue Triblend



Dark Red Triblend



Grey Triblend



Navy Triblend



Solid Black Triblend

### BE108

#### Unisex triblend lightweight hoodie

- All rib
- Relaxed fit
- Unisex fit

F 50% Polyester, 25% Combed and ring spun cotton, 25% Rayon. 30 single

W 190gsm

**XS** 32/34" **S** 34/36" **M** 38/40" **L** 42/44" **XL** 46/48" **2XL** 48/50"





J265F

J265M

FEMININE  
FIT

## J265F

### Women's authentic hooded sweatshirt

- Contemporary, feminine fit
- Flat chunky drawcord
- Double-layer hood

F 80% Combed ringspun cotton, 20% Polyester

W 280gsm

XS 30/32" S 32/34" M 34/36" L 36/38" XL 38/40"



## J265M

### Authentic hooded sweatshirt

- Contemporary hooded sweatshirt
- Flat chunky drawcord
- Double-layer hood

F 80% Combed ringspun cotton, 20% Polyester

W 280gsm

XS 34/36" S 36/38" M 38/40" L 40/42" XL 42/44"  
2XL 44/46" 3XL 46/48"



## J266M

### Authentic zipped hooded sweat

- Chunky drawcord with buttonhole eyelets
- Contemporary look
- Kissing (covered) YKK metal zip for full cross body decoration

F 80% Combed ringspun cotton, 20% Polyester

W 280gsm

XS 34/36" S 36/38" M 38/40" L 40/42" XL 42/44"  
2XL 44/46" 3XL 46/48"



J266F

## J266F

### Women's authentic zipped hooded sweatshirt

- Contemporary, feminine fit
- Chunky drawcord with buttonhole eyelets
- Kissing (covered) YKK metal zip for full cross body decoration

F 80% Combed ringspun cotton, 20% Polyester

W 280gsm

XS 30/32" S 32/34" M 34/36" L 36/38" XL 38/40"



J266F

J266M

FEMININE  
FIT

## J265F, J265M, J266M & J266F

are available in the following colours:

Apple	Black	Bottle Green	Bright Royal	Classic Red	Convoy Grey	French Navy	Fuchsia	Light Oxford	Lime	Purple	Sky	White
		New			New				New			



# AUTHENTIC HOODED SWEATSHIRTS

J281F

J281M



FEMININE  
FIT



J281M

**J281F & J281M**

are available in the following colours:

Black

Blue  
Marl

Coral  
Marl

Green  
Marl

Grey  
Marl

Pink  
Marl

Purple  
Marl

Red  
Marl

Silver  
Marl

White

Yellow  
Marl

NEW  
17

## J281F

### Women's HD hooded sweatshirt

- Contemporary slim fit with raglan sleeves
- Jersey lined hood, cover seam drawcord channel
- Removable, adhesive neck label

F 65% Polyester, 35% Combed ringspun cotton  
W 250gsm

XS 8 S 10 M 12 L 14 XL 16

NEW  
17

## J281M

### HD hooded sweatshirt

- Contemporary slim fit with raglan sleeves
- Jersey lined hood, cover seam drawcord channel
- Removable, adhesive neck label

F 65% Polyester, 35% Combed ringspun cotton  
W 250gsm

XS 34/36" S 36/38" M 38/40" L 40/42" XL 42/44"  
2XL 44/46"

K

## J575M

### Hooded sweatshirt

- Modern construction of sleeves
- Straight cut for contemporary look
- Flat, chunky drawcord

Available in kids, see page 423

F 50% Combed ringspun cotton, 50% Polyester  
W 295gsm

XS 34/36" S 36/38" M 38/40" L 40/42" XL 42/44"  
2XL 44/46"



16  
COLOURS

J575M

FEMININE  
FIT





FRUIT OF THE LOOM®

